

# Ashlar-Vellum Channel Partner Newsletter

## April 2011

### Legacy Upgrades Discontinued July 1<sup>st</sup>

Just a reminder that after July 1<sup>st</sup>, 2011 upgrades from Vellum 2D™, Vellum 3D™, Vellum Draft™, and Vellum Solids™ will no longer be available.



Software that is 10 years old and older will no longer be considered eligible for standard upgrade pricing. We have offered significant discounts on these upgrades over the past two months and will continue to offer a 10% discount on the standard upgrade prices through the month of May.

Emails were sent on Tuesday to customers reminding them that they can receive a 15% discount for upgrading by the end of April.



### Disappearing Palette Bug Exterminated in Graphite

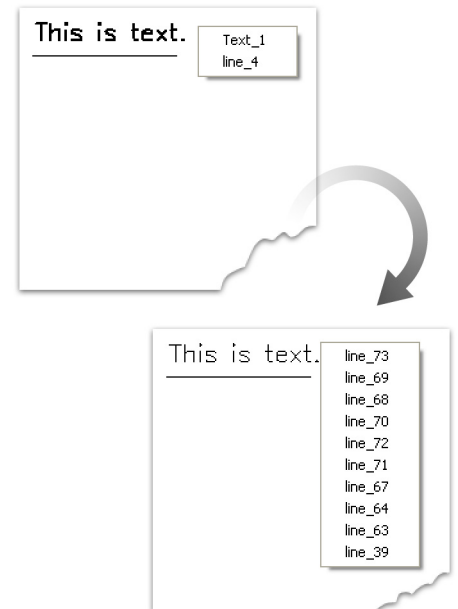
The Graphite development team is reasonably sure they've nailed the bug whereby extreme power users rapidly clicking on icons caused the Graphite main tool palette to disappear and the software to crash. This issue has been part of Graphite since its inception but has only become noticeable as machines have become faster.



A special build is privately available to the small number of users experiencing this issue while final testing is being done. The fix will be publically available in the next hot patch update. If you have customers experiencing this issue, first use **Help>Check Web for Updates** to see if a new build has been posted. If that does not resolve the issue submit a support ticket for instructions and the special link to our FTP site.

### Tessellated Text Utility Added to Graphite

A new utility is being made available for Graphite that will tessellate the letters of stroke-type fonts—such as those in .fnt, .asx, and .shx files—into lines segments. This allows CAM software that won't otherwise accept standard text in DXF files to cut, laser or water jet the shapes of the letters during production.



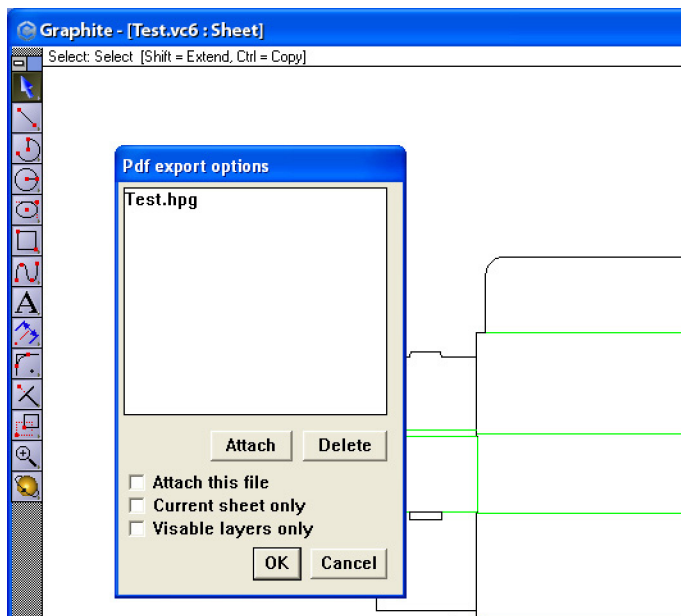
This utility requires one of the next publically released builds of Graphite v8. Future versions of the utility will support OpenType, PostScript Type 1, and TrueType fonts.

## New PDF Options Coming in Graphite v9

We're adding two new options to the PDF export function in Graphite v9.

First, users will be able to select *Current sheet only* instead of all sheets which is the standard now.

Second, users can opt to export *Visible layers only*. This is being introduced because Preview on the Mac currently ignores the state of layers being on or off and it's particularly useful to present drawings where only the desired layers can be seen.



## Dynamic Motion Software

Ashlar-Vellum is looking to add dynamic motion analysis and presentation software for those customers who need these capabilities. Unlike mere kinematic analysis that calculates the motion of 3D parts without any reference to the physics involved, dynamic motion calculates the motion of objects in relationship to forces, torques, inertia and gravity with defined joints, constraints, actuators, springs and dampers.

## Website Optimization Progress

Significant progress is being made on optimizing the Ashlar-Vellum website to be found by search engines. Andrey Simakov and Julie Bou are working together to create a site more heavily weighted toward searchable text without losing the rich graphics or ease of use. None of the changes have been posted to the public website yet.

## All in a Month's Sales

A few minutes after we'd sent out the Proven Success Story #12, "Dare to be Square," a gentleman called and said, "I got an email from you today. Do you sell bathtubs?"

"No," Julie Bou explained. "We don't sell bathtubs, one of our customers, industrial designer Kevin Quigley, used our Cobalt software to design the tubs." She hung up the phone with a large sigh and related to the story to Robert Bou.

Robert laughed and said, "Next time tell them, 'No, but we sell space ships.' I'd really like a commission on one of those."



Above: Kevin Quigley's design of the Capri tub for Victoria & Albert Bathtubs.

Below: Greg Jones, CTO of Orbital Expeditions, designs the system integration hardware for spaceflight payloads.

