

# Ashlar-Vellum Channel Partner Newsletter

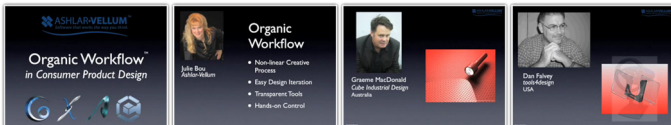
## August 2009

### Check out Ashlar-Vellum on eCorpTV

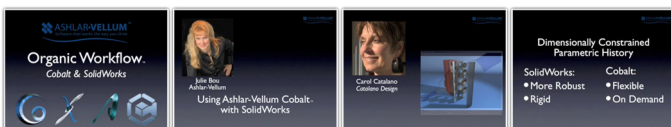
The Ashlar-Vellum movies *Introduction to Organic Workflow* and *Cobalt & SolidWorks* are both now live on eCorpTV.



eCorpTV is dedicated exclusively to business video sharing. Businesses large and small use eCorpTV to present marketing and business videos in a professional web environment, without the clutter of consumer video sharing sites. Links to these videos will be included in an upcoming version of *PD&D Design Daily*, the on-line newsletter for product designers. Check out the movies at the links below.



*Organic Workflow Movie*



*Cobalt & SolidWorks Movie*

### August Upgrade Sale

Ashlar-Vellum's August sale on upgrades to existing users proved quite successful in encouraging many users to make a move to v8 now rather than continuing to wait indefinitely.

### Bou in Kiev

Robert Bou joined Vladimir Karpenko with our team in Kiev, Ukraine for a week of intensive work on our software. New features for v9 of both Graphite and the 3D modeling products were also discussed.



*Clockwise from far left: Robert Bou, Alexandr Sapozhnik, Vladimir Karpenko, Konstantin Zinchenko and Andrew Patlan.*

### Cobalt, Xenon & Argon v8 SP2

Service Pack 2 for Cobalt, Xenon and Argon is in beta testing and anticipated to be release toward the end of this month or early September. Included in Service Pack 2 are over 40 bug fixes and optimizations, plus the following enhancements:

- Sketch Rendering
- User-defined Stroke Shortcuts
- Layer Sets

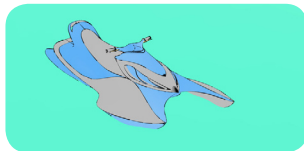
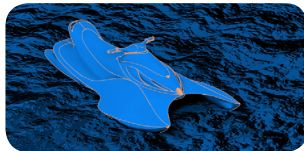
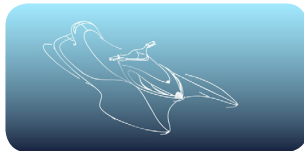
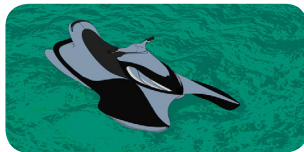
***Continued...***

## Sketch Rendering

Sketch rendering for stills and animations makes it easier for computer-generated models to look hand drawn. By avoiding the photo-realistic rendering look, artistic and emotional appeal can be brought out in the design. It is particularly appropriate in the early stages of conceptual design to avoid the feeling of completion.

Sketch styles include:

- Cartoon
- Color Wash
- Contour
- Hand Drawn
- Hatch
- Ink Print
- Line & Color Fill
- Line & Shadow
- Mosaic
- Oil Painting
- Rough Pencil
- Soft Pencil
- Stipple



## Stroke Shortcuts

Stroke shortcuts allow users to define a stroke (mouse motion with the Command key on Mac or Ctrl+Shift keys on Windows) for any short cuts that activates a menu command or icon.



## Layer Set

Layers may now be assigned to various sets making it easy to visually turn on and off appropriate visual aspects of a model. The number of layer sets is virtually unlimited with layers assigned to as many sets as necessary.

