

Ashlar-Vellum Channel Partner Newsletter December 2006

v7 Service Pack 2 & 3 Update

At the time of this writing Cobalt, Xenon and Argon v7 sp2 are being released to the public for download at www.ashlar.com/v7. Customers in the US and Canada will be notified by email. Graphite v7 sp3 holds *Release Candidate 1*

status and will hopefully be available by Christmas. CD shipments for the modeling customers are being held for the Graphite courtesy software and will go out in January.

EuroMold 2006 Success



Walter Arnold, Robert and Julie Bou, and Karl Gisler
at the Ashlar-Vellum stand in EuroMold 2006.

Walter Arnold and Karl Gisler of Arnold CAD exhibited Ashlar-Vellum software to the 60,000 attendees of EuroMold in the Frankfurt Exhibition Center, November 30th – December 2nd. Robert and Julie Bou joined them at the show for the first day.

With over 1600 exhibitors the show covered over 80,050 sqm or 720,000 sqf of floor space. Needless to say, we did not see it all. EuroMold is a world fair for

mold making and tooling, design and application development. It targeted designers, engineers, product development and production people for all types of industries and materials.

“We have a good feeling about the show and many interesting contacts from it,” said Gisler. “I think we have represented Ashlar-Vellum for the whole European market in a good way.”

Happy Holidays
All of us at
Ashlar-Vellum
in the US and
in the Ukraine
wish you a
blessed holiday
season and
a prosperous
new year. We
appreciate
your hard
work in 2006
and look
forward to
great success
in 2007.



Graphite Project Licensing

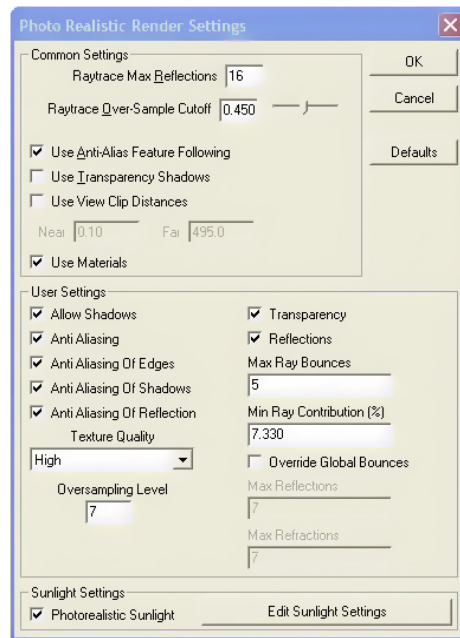
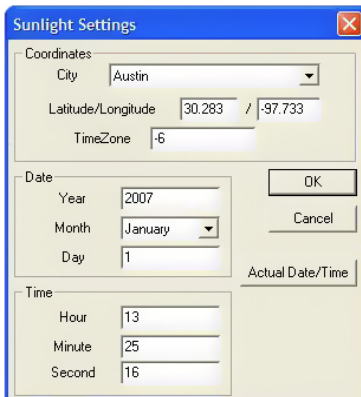
Last month we introduced enterprise-wide licensing for Graphite. This month we've come up with an additional twist on that idea. Ashlar-Vellum is preparing to also launch Graphite Project Licensing, so that every member of a project team, no matter what company they work for, has access to easy-to-use, precision drafting software. This unique licensing scheme will be issued on a quarterly or yearly bases using expiring registration codes.

Can people use Graphite for something other than the project for which it was purchased? Of course. In fact, we hope they will. That way when this project is complete, they'll continue using it for other things, renewing their license when necessary.

We'll let you know when the pages are up and operational sometime next month.

New Photo-realistic Sunlight Setting

Version 8 of Cobalt, Xenon and Argon will feature photo-realistic sunlight settings for stills and animations. This makes it easy to do light and shadow studies for architectural designs. Just enter the longitude and latitude, the date and the desired time of day as shown in this prototyped dialog box below. The rendering results will reflect the correct position of the sun at that time and season of the year.



Office Openings and Closings

The Ashlar-Vellum administrative offices will be closed the week of December 25 through the 29th but our sales line will be open on the 26th through 29th to facilitate end of year orders. Please be sure to send orders to order.processing@ashlar.com NOT someone's personal email which may not get checked regularly. Tech Support will be available through our website during that time or by sending an email to support@ashlar.com.

New Product and Specification Sheets for v8 in Development

Our marketing team is currently working on updating the product sheets and specification sheets for version 8 of all four Designer Elements products. Luc Heiligenstein's sports watch will be the new item that appears on all four products in different forms. Look for these after the first of the year in both 8 1/2 x 11 and A4 layout formats.

More about all v8 3D Modeling Features

Many of you have been asking for more information about each of the many new features listed for Cobalt, Xenon and Argon. We've provided it in the chart over the following pages.

Anticipated
March 2007

All features are subject to change without notice prior to version release.



Feature	Benefit	More			
Feature arrays.	<ul style="list-style-type: none"> Faster execution on large patterns. 	Allows a specific feature or collection of features to be duplicated in an array or pattern. This is different from the v7 implementation because now surfaces within a part can be selected to array. Not only is all the set up in one command but the calculations are optimized to be 10 to 15 times faster.	Co		
Real-time section profiles and cutaway views in edit window.	<ul style="list-style-type: none"> Facilitates design inspection and verification. 	This is a viewing tool that is seen live in the edit window without requiring copying and modifying to the model using the trim tool as was done in v7.	Co		
Enhanced rib tool.	<ul style="list-style-type: none"> Covers more cases. 	More robust tools handling a number of special cases.	Co		
Conditional equations.	<ul style="list-style-type: none"> More complex and intelligent geometric constraints. 	Add <i>if-then-else</i> statements to the parametric constraints bounding the upper and lower limits. For example, currently a sketch could have the dimensions $D2=D1 \times 3$. If the maximum constraint is 20 and the minimum constraint is 1, in v8 a conditional equation could be written: <i>If $D1 \times 3 \geq 20$ then 20 else if $D1 \times 3 \leq 1$ then 1 else $D1 \times 3$.</i> This bounds the dimension at 1 and 20.	Co		
Photo-rendered model-to-sheet views.	<ul style="list-style-type: none"> Better client presentations. Photoshop composites not necessary. 	Any number of views can be photo-rendered and composited with the line work as desired.	Co	Xe	
Non-photo-realistic "Sketch Rendering" for stills and animations.	<ul style="list-style-type: none"> Increased client interaction during design presentations. 	These stylized, artistic effects for stills and animations help convey conceptual intent of the design. They are particularly useful for communicating particular stages of the design process.	Co	Xe	
Real-time environment maps in edit window.	<ul style="list-style-type: none"> Interactive feedback on surface aesthetics. 	Environment maps can be used to interactively evaluate curved surfaces in real-time rather than waiting for the scan-line rendering used in v7.	Co	Xe	

Continued...

Feature	Benefit	More	Co	Xe	Ar
Courtesy copy of Graphite v8.	<ul style="list-style-type: none"> • Compatibility with other Ashlar-Vellum Graphite users. 	New features in Graphite v8 include: <ul style="list-style-type: none"> • Mid-point Line Tool • An Updated User Interface • Resizable Dialog Boxes • Tear-off Tool Palettes • Dockable Tool Palettes • Spacebar Pan • Universal Binary Support for the Intel Mac • Support for File Names Over 32 Characters Long • AutoCAD 2007 DWG/DXF Support • Direct, Multi-sheet PDF Creation with Optional Imbedded DXF Export • New Installer • Pen Style Palette • Eyedropper Tool 	Co	Xe	
Real-time zebra, normal, curvature & draft check in edit window.	<ul style="list-style-type: none"> • Interactive feedback on surface aesthetics. 	All surface checking, including zebra, normal, curvature and draft check displays can be applied to an entity without going to a separate mode or waiting for a scan line rendering. Use the Edit Object box or right click the mouse to apply the verification method.	Co	Xe	Ar
Real-time display in 3D of imported scanned hand sketches or other images.	<ul style="list-style-type: none"> • Significantly easier trace-overs. 	Sketches stay while tracing in real time.	Co	Xe	Ar
Direct support for imprinting profile sketches onto surfaces and solids to create surface subdivisions.	<ul style="list-style-type: none"> • Saves five steps. 	One click not five to imprint a sketch on a surface.	Co	Xe	Ar
Accelerated Phong and Gouraud shading options for fly-by and walk-through animations.	<ul style="list-style-type: none"> • Significantly faster rendering for path verification prior to final high quality rendering. 		Co	Xe	Ar
Accelerated Phong and Gouraud shading options for render to file.	<ul style="list-style-type: none"> • Super fast render to file when photo-realism is not required. 		Co	Xe	Ar
Photo-realistic environment maps for stills and animations.	<ul style="list-style-type: none"> • Less set-up time for renderings. 	Quickly creates a simple six-sided image as an environment reflecting the surroundings of a model, without introducing a new object in the model.	Co	Xe	Ar

Continued...

Feature	Benefit	More	Co	Xe	Ar
Photo-realistic sunlight (from location and date/time) for stills and animations.	<ul style="list-style-type: none"> Easier light and shadow studies for architectural design. 	Rather than setting up a static light pointing at a model, this calculates the position of the sun given the latitude, longitude, date and time, revealing shade and exposure throughout the year.	Co	Xe	Ar
Photo-realistic fluorescent lights and area lights for stills and animations.	<ul style="list-style-type: none"> Improved realism of photo-realistic renderings. 	This generates a diffuse tube of light with the proper geometric pattern and color temperature.	Co	Xe	Ar
Directly move faces and edges in solids without using the specialized local face tools.	<ul style="list-style-type: none"> More interactive modeling. 	Just grab and move a face or collection of faces using the selection or move tool.	Co	Xe	Ar
Photo-realistic material changes displayed in real time in the edit window.	<ul style="list-style-type: none"> Saves hours of time during photo-realistic rendering refinement. 	Changes display in real time without the inconvenience of using a modal dialog box.	Co	Xe	Ar
Enhance Spacemouse-device support to include Mac (previously on Windows).	<ul style="list-style-type: none"> Enhanced productivity and comfort for 3D modeling with this high performance motion controller. 		Co	Xe	Ar
Multiprocessor photo-realistic rendering and animation on Mac OS X.	<ul style="list-style-type: none"> Dramatically decreases rendering time by dividing across all available processing cores. 	This was previously supported on Windows only.	Co	Xe	Ar
Direct, multi-sheet PDF creation with optionally embedded source and exported files.	<ul style="list-style-type: none"> Facilitates accurate archiving, emailing and communication of CAD files. 	Create PDFs directly from within the program and embed native Ashlar-Vellum files along with DXF, SAT, STL and other useful formats in the file. PDFs email reliably without changing to text. They accurately reproduce fonts, line styles and patterns. Ashlar-Vellum and other CAD files allow future manipulation of data.	Co	Xe	Ar

Continued...

Feature	Benefit	More	Co	Xe	Ar
Updated interface with dockable tools and palettes.	<ul style="list-style-type: none"> • More comfortable, customized workspace for greater productivity. 	Tool and palettes couple with other palettes rather than floating in space.	Co	Xe	Ar
New installer.	<ul style="list-style-type: none"> • Easily check that latest version is installed. • Compatible with higher security of today's operating systems. 	Quickly check to see if a new update is available from the website, then download and install just the update, not the entire program. This allows: <ul style="list-style-type: none"> • Keeping designated Preferences. • Keeping registration code in place. • Quickly installing patches. • Downloading smaller files. • Updating software with less effort. 	Co	Xe	Ar
Universal Binary Support for Intel & Power PC Macs.	<ul style="list-style-type: none"> • One version natively supports all OS X Macs. 		Co	Xe	Ar
Compatible with ACIS 16 & Parasolids 19 for import and export.	<ul style="list-style-type: none"> • Greater cross-industry file compatibility. 		Co	Xe	Ar
Model to Sheet View automatically draws scale as text element.	<ul style="list-style-type: none"> • Reduces errors. 	Automatically adds scale to layout with the view names reducing confusion among different scaled views.	Co	Xe	Ar
Simplified menus for Text and Dimension fonts and size selection.	<ul style="list-style-type: none"> • Fewer mouse clicks. 	Consistent non-modal dialog boxes and pull down menus facilitate font, size, style and other features for both text and dimensions.	Co	Xe	Ar
Enhanced import/export dialog box featuring target and source software by product name.	<ul style="list-style-type: none"> • Makes instantly obvious the best format to communicate with different software. 	Click the tab to switch between a list of source programs or a list of file formats to more easily choose the correct translation.	Co	Xe	Ar
Customizable photo-rendering scene presets.	<ul style="list-style-type: none"> • Total control of all aspects of a photo-rendered scene. 	Enhanced scene control for anti-aliasing, shadows, reflections, textures and transparency.	Co	Xe	Ar