

# Ashlar-Vellum Channel Partner Newsletter

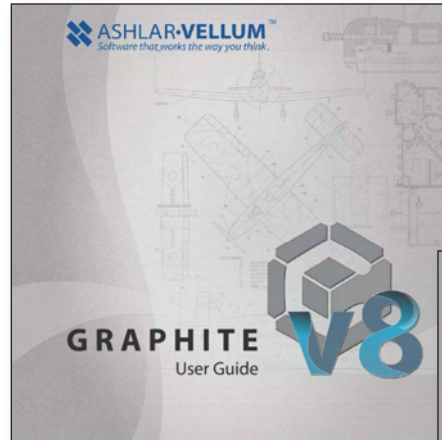
## July 2007

### New Graphite v8 Documentation

The Graphite v8 *User Guide* and *Getting Started Guide* are now released and available for download at <http://www.ashlar.com/sections/support/documentation/documentation.html>.

The documentation is also being compiled into the software, accessed under the Help menu.

Printing through our virtual production sources is now being queued for all customers expecting full materials for Graphite v8 using high-resolution versions. If you would like access



to this high-resolution version for local printing on an off-set press, please send an email to [julie.bou@ashlar.com](mailto:julie.bou@ashlar.com) for the ftp links to download these files.



### Beta Builds

The PPC Mac beta builds for Cobalt, Xenon and Argon v8 were added to the website earlier this month along side those for Windows.

As of this writing they are v8 SP0 BETA Build 809b for Windows and 809c for Mac. These Mac builds are for Power PC with OS X. The universal binary version to support the Intel chip on Mac is still in development and will be coming soon. In the meantime



the Windows builds can be used under the Parallels 3.0 or Boot Camp emulation on the Intel Mac. At this time we know that the precise hidden line

option in Model to Sheet and the dimensional constraints do not work in the PPC Mac versions.



## New Trial Code Process for Demos

We've change our process for sending trial codes to customers who download a demo of our software. When a customer requests a download link for our software, the system automatically responds with the link. It also sends an email to our team who will immediately send them a 2-day code with a message saying that a 14-day code can be obtained by providing full contact information. That contact information is then added to the original record in the database

and is checked so that we can eliminate those that abuse the system by perpetually asking for additional codes.

Dmitriy Bondarev leads the effort of getting demo codes to customers. The system is checked regularly over about 18 hours/day including holidays and weekends, assuring that most customers will not have to wait more than a few hours for their first code.



## Upgrade Options

Have you ever tried to remember what was the difference between Graphite v6 and Graphite v8, or what's been added to Xenon over the various releases? How about enumerating the advantages that Xenon or Cobalt v8 offer over Vellum Solids and what's the upgrade price? The answers to all of these questions and many more can be quickly found in our Upgrade Options pages on our website.

From our Home page, follow **Products>Upgrades** and click on the ad

or just go directly to <http://www.ashlar.com/sections/products/upgrade-options/upgrade-options.html>.

Click on the product and version that your customer will be upgrading *from*. The next page shows most of the features

**Click here**  
to see how your old software has retained its value toward the current version



that have been added to that version up through the current release. Scroll down the list to see standard retail pricing for that upgrade.

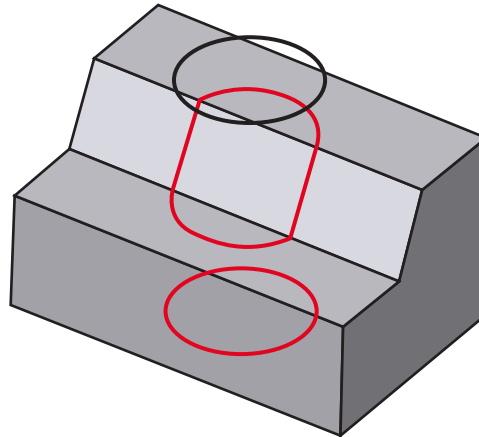
## Curve/Surface Projection Tool Enhanced

The Curve/Surface Projection tool in the upcoming v8 of Cobalt, Xenon and Argon supports imprinting profiles onto surfaces and solids to create surface subdivisions.

Select the Curve/Surface Projection tool from the Surface Utilities tool palette and these options appear in the message line:

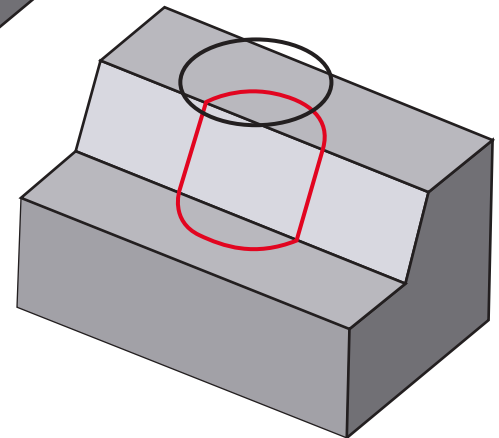


- Through
- To Entity
- To Face

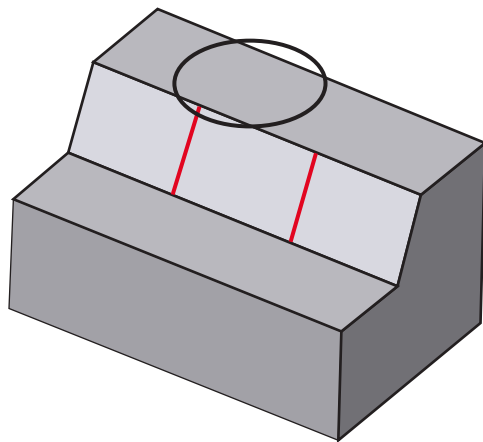


The Through mode projects a curve on a surface that intersects the entire object.

The To Entity option projects a curve where it first touches the object.



Use the To Face mode to project a curve only on the specified face.



## Home Page Update

Have you seen the new animated banner on [www.ashlar.com](http://www.ashlar.com) promoting the beta versions and release of Graphite v8? You'll also see some new ads linking to our Support Center for support tickets and our knowledgebase.

**Ashlar-Vellum is Proud to Announce Open Beta for Release of**

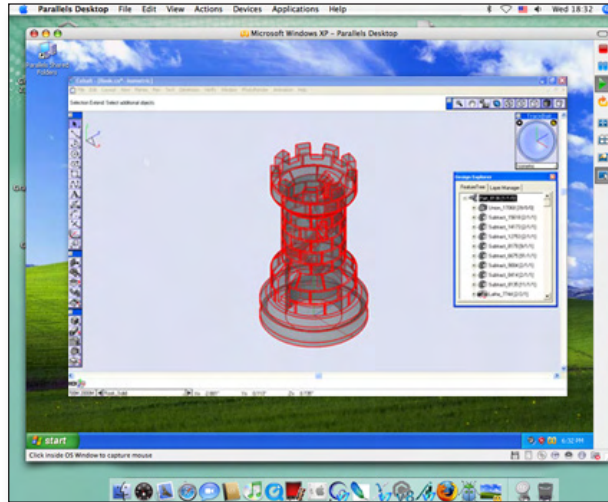
[Click here to download a beta](#) [Click here to learn more](#)



## Parallels 3.0 Now Works with Ashlar-Vellum Software

Parallels has just released build 4560 of the Parallels Desktop version 3.0. Offering high performance 3D graphics support, this new version works well with Cobalt, Xenon and Argon v7 and with all the v8 betas, including support for the real-time environment maps. This allows users to run Microsoft Windows in a window under Mac OS X, on the Intel Mac.

Previous builds of version 3.0 interfered with the Drafting Assistant, but this build tested well running Windows XP. Vista has not been specifically tested.



Also available is VMware Fusion. This emulation product is still in beta and has similar performance to Parallels 2.0 which for Cobalt, Xenon and Argon is acceptable.

The best bet for great graphic performance running Cobalt, Xenon, Argon or Graphite on the Mac Intel is still Boot Camp from Apple.

## Section 508 Statement of Compliance

The United States Federal government enacted a law requiring that their electronic and information technology systems be accessible to people with disabilities. Section 508 was enacted to eliminate barriers in information technology and make available new opportunities for people with disabilities. Frequently, when selling to US government agencies, including

**Ashlar-Vellum**  
Statement of Section 508 Compliance  
Cobalt™, Xenon™, Argon™ and Graphite™

This document provides an analysis of Ashlar-Vellum drafting and 3D modeling in relationship to the United States Federal government's Electronic and Information Technology Accessibility Standards as published in Section 508 Part 1194. Subsets of those standards are included here. Ashlar-Vellum software refers to all products offered by Ashlar Incorporated, specifically Cobalt, Xenon, Argon and Graphite.

This document is a statement of compliance analysis and is not intended as a certification of compliance.

Section	Criteria	Features	Remarks
508.1194-21(a)	Keyboard executable functions	<ul style="list-style-type: none"> <li>• Status Line</li> <li>• Macro Functions</li> </ul>	Keyboard shortcuts are provided for some menu functions. A macro interface allows keyboard commands to be defined for all menu functions. A status line provides an alternative input method for coordinate locations and other geometric parameters. Some functions, such as mouse-driven object creation are not accessible via the keyboard.

NASA and the DOE, software companies are required to submit a Statement of Compliance with Section 508.

Ashlar-Vellum's Statement of Compliance is available on our website for Cobalt, Xenon, Argon and Graphite at [http://www.ashlar.com/sections/products/section\\_508/section\\_508.html](http://www.ashlar.com/sections/products/section_508/section_508.html). A PDF of the statement is also available there.