

Ashlar-Vellum Channel Partner Newsletter

October 2010

Welcome Henge Docks

Matthew Vroom and Alex Bagden, two of Henge Docks' three founders joined Ashlar-Vellum trainer, Nick Slaughter, in Austin this month for a three-day session on Cobalt.



Alex Bagden, left, and Matthew Vroom of Henge Docks at Cobalt training.

Quickly connect and disconnect all peripherals. This is Henge Docks' docking station for Apple's notebook computers.



Henge Docks created the first truly comprehensive docking station solution for Apple's line of notebook computers. The docks allow users to quickly and easily insert and remove their MacBook computers into a desktop or home theater setup for versatile use. Just plug the laptop into the dock for complete access to all peripherals. When you need to fly, lift out the laptop and away you go. Matt conceived of the idea in 2007 and rented Ashlar-Vellum ArgonTM for several months to detail the initial sketches. When the company was founded in 2009 the team utilized Ashlar-Vellum's *Reach for Your Dream* program giving them Cobalt free for three months and a discount on continuing licenses.

HENGE·DOCKSTM

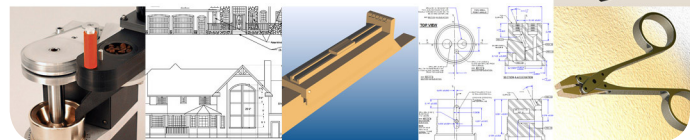
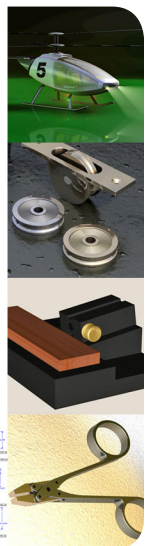
Docking Stations for Apple Notebook Computers

Based in Arlington, VA, the company was named after

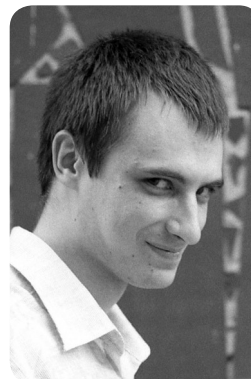
the circle of large vertical standing stones found at Stonehenge north of Salisbury, England. Learn more about them at www.hengedocks.com. Look for a complete Ashlar-Vellum Proven Success story in the upcoming *Design Explorer* user newsletter.

Updates to the Website

Web developer and graphic designer par excellence, Andrey Simakov, has been busy updating the Ashlar-Vellum Resource Library and our Gallery. Masters for new product logos, spec sheets and newsletters are being added to the Resource Library. New customer drawings and models are in our Gallery. Check it out if you haven't visited there lately.



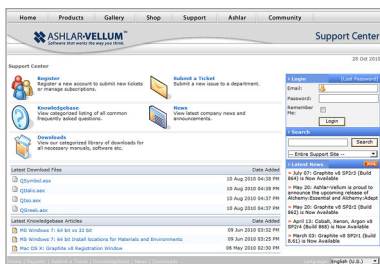
Get Well Soon Georgiy



Georgiy Sokolov, Ashlar-Vellum Graphite developer extraordinaire, is recovering from an injury sustained from playing soccer earlier this week. Just as Georgiy plays soccer with gusto, he also never fears a programming challenge for Graphite. We send him our best wishes for a speedy recovery.

Updated Utility Scripts

The utility scripts for Graphite v8 SP2 have been updated and posted to the Support Center under Downloads on the website.



These updated scripts do the following:

- **SetLineWt Script** changes the factory line weight defaults to user-specified settings.
- **ReTypeArc Script** optionally converts selected center-point arcs to 3-point arcs.
- **FixSelectedObject Script** corrects improperly defined imported arcs and splines for selected objects.
- **FixDocument Script** corrects improperly defined imported arcs and splines through the entire document.
- **Stretch Tool** stretches geometry in one direction when used within Graphite.
- **Convert Curves/Linearize Script** changes Graphite arcs, splines and circles to polylines for CNC or laser cutting.
- **Draw by Layers Script** causes items to draw in the order placed in the layer manager, enabling appropriate obscuring as items are printed or drawn to the screen.

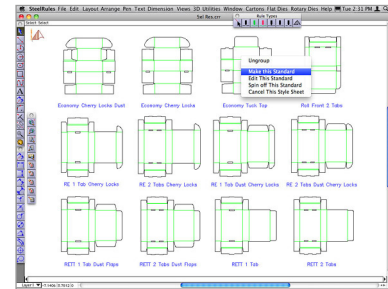
STU Renewals

Student/Teacher Unit special-use licenses are coming up for renewal next month. Emails have been sent out to all v7 and v8 STU license holders. Those using v7 will need to upgrade to v8. Those using v8 can renew at no cost. Both must sign the Special-use Licensing Agreement and return it with proof of enrolment or faculty status. STU licenses are for students and for instructors actively using our software to teach design.

Expand Your Business with AlphaCorr



Utilize your experience with Ashlar-Vellum Graphite by adding AlphaCorr products to your list. Built on the Graphite CAD engine, AlphaCorr is powerful and easy-to-use packaging and point-of-purchase display design software.



AlphaCorr customers offer several advantages to Graphite sales professionals:

- These are high-touch, high-service customers who like to be visited.
- They are accustomed to expensive software since they are part of a small market.
- All competitive software is more expensive and much harder to use.
- They accept the hardware key so there's no issue with under licensing.
- They are easy to identify and prolific across all industrialized areas.

AlphaCorr offers a 10% margin for occasional resellers up to 40% for qualified value-added resellers. If you're interested in learning more about becoming an AlphaCorr reseller contact Mike Minton at mike.minton@alphacorr.com.