



Training Closes the Circle for Henge Docks



Henge Docks created the first truly comprehensive docking station solution for Apple's line of notebook computers. The docks allow users to quickly and easily insert their MacBook computers into a desktop or home theatre setup for versatile use. Just plug the laptop into the dock for complete access to all peripherals. When it's time to run, lift out the laptop and away you go.

Matt Vroom conceived of the idea in 2007 and rented Ashlar-Vellum's Argon™ for several months to detail the conceptual sketches. In 2009 Matt founded Henge Docks with Alex Bagden and Ben Maskell. During that time the team utilized Ashlar-Vellum's [Reach for Your Dream](#) program giving them Cobalt™ free for three months and a discount on continuing licenses.

Sometime later Matt and Alex attended Ashlar-Vellum training in Austin, TX. During one learning exercise they modelled a drill bit using Cobalt. As Alex tells it:

"A drill bit looks really complex but when we did it, it was actually really easy to do and I went, 'Wow! That makes a lot of sense.' And a lot of light bulbs went off for me when we did that."

Training also helped Matt, a self-taught user, to get rid of his bad habits and learn the parameters of what was possible in the program.

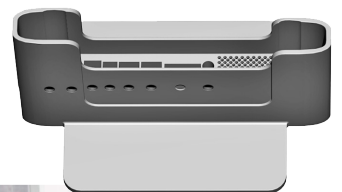
Now Matt is using Cobalt to design the next generation of docks which will sit horizontally with all of the ports integrated into the design. As a designer, rather than an engineer, Matt tells us:

"Where Cobalt has been really helpful in the design process is that it allows me to get my ideas to the point that I can give them to an engineer at the factory and they can work out...the details...I can get the design to be where it needs to be really quickly without having to make decisions that I'm not qualified to make."

Based in Arlington, VA, the company was named after the circle of large vertical standing stones found at Stonehenge north of Salisbury, England.



Henge Docks quickly connect and disconnect all peripherals while eliminating clutter.



Choose exactly the connections needed for your peripheral and hardware combination.

Background/Contact:

For more details on this project contact:

Matthew Vroom

Alex Bagden

Henge Docks LLC

888 North Quincy Street #701

Arlington, VA 22203

202-596-5914

matthew.vroom@hengedocks.com

alex.bagden@hengedocks.com

www.hengedocks.com