

The Design Explorer

The Ashlar-Vellum User Newsletter

First Quarter, 2010

Graphite™ v8 SP2 and Hot Patch 1 & 2 Released

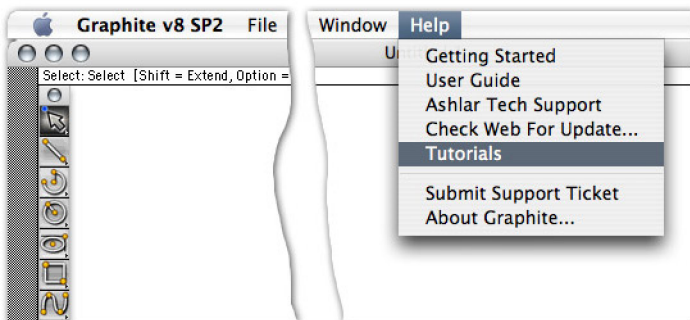
Service Pack 2 for Graphite v8 was released January 20, 2010. Hot patches 1 and 2 for SP2 were posted in March.



These are updates for all Graphite v8 users, including those with courtesy Graphite licenses with Cobalt™ and Xenon™ v8.

Included in the service pack was:

- Support for large format printers at high resolution
- Direct access to tutorials and sample files from within Graphite



- Copy/paste commands to Microsoft Word for Windows
- Numerous bug fixes and functional enhancements

Hot Patches 1 & 2 added:

- Copy/paste commands to Microsoft Word for Mac
- Line weight control for detail view hatching
- Improved multi page printing
- "More" option on font menu for Mac
- Enhanced page bounds display for printable area
- Correct display of dotted lines

To access these updates, from within Graphite v8 go to **Help>Check Web for Updates** to download the latest version.

If you're using legacy software, call Ashlar-Vellum today to upgrade to v8 at +1 800 877 2745 or contact your local reseller.

Meet Alexander Gorbatovsky

We're pleased to welcome Alex Gorbatovsky to our Cobalt development team. Alex comes to us with over 15 years of experience as a developer for CAD, CAM, 3D modelling, and interfaces among them to other things. His education is in mechanical engineering for the aviation industry.



Spot Light on Vellum:accessories



Vellum:tracks

Vellum:tracks offers royalty free soundtrack music to enhance the presentation of CAD movies. Using any audio editing software you can simply edit the tracks to the appropriate length and drop them into your movie. Written and recorded by Devolver Music, Vellum:tracks provide a wide variety of musical styles.

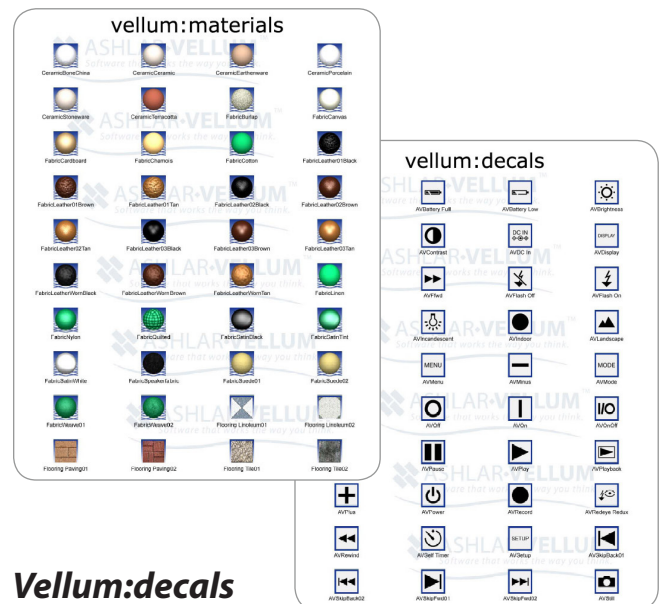
“The music is cutting edge with an edge, well suited to complimenting modern 3D CAD designs. I appreciate having such royalty-free tracks on hand to augment CAD presentations.” – John Schussler.



[Click here](#) to listen to samples of all of them. US\$100.

Vellum:materials

A great collection of prototype surface and finishes, Vellum:materials reduces time and energy rendering any kind of computer-generated object. The library has over 300 natural and manmade materials and finishes such as ceramics, metallic paints, plastics, metals, fabrics, woods, and leather, suitable for all industries. To learn more or see a full listing [click here](#). US\$100.



Vellum:decals

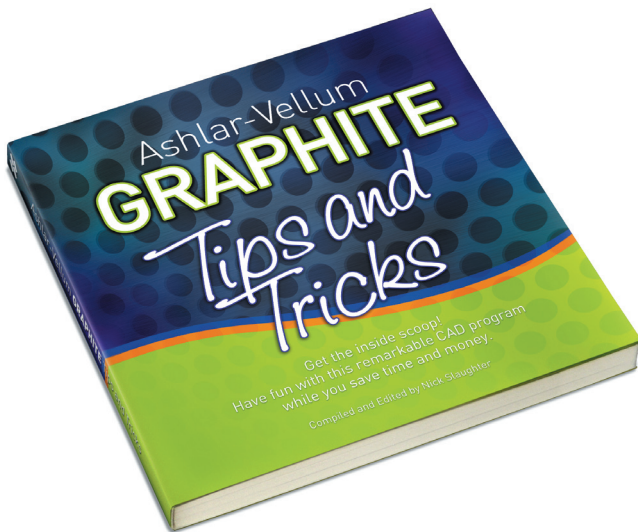
Save time when rendering by using the decals library with over 300 designs for AV, computers, digital, hazard, keyboard, recycle, shipping, signage and telephone. [Click here](#) to see them all. US\$100.

Continued...

Graphite Tips & Tricks

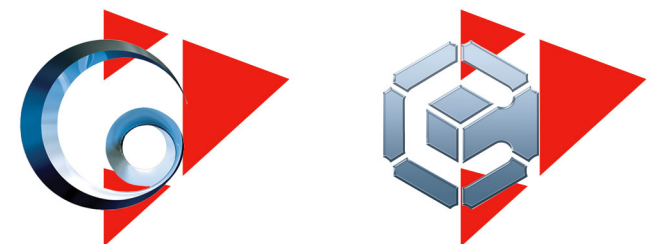
By far our most popular accessory, our *Graphite Tips & Tricks* book gives you the power-user tips for getting the very most out of Graphite. Over 80 tips are included in this volume.

Learn how to string tools and commands together for powerful performance. Understand the power of Sheets, Views and Models. Place radius, diameter and angular dimension at precise locations. Create non-associative detail views. To learn more, [click here](#). US\$49.



Cobalt Share Graphite Share

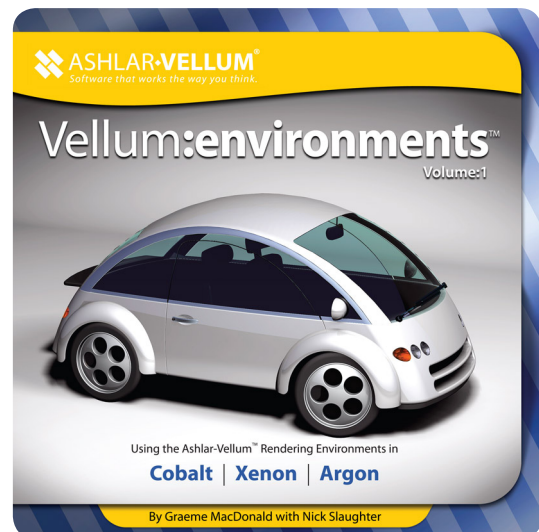
Open, view, print and export Ashlar-Vellum files to a number of other file formats. Great when collaborating with others using AutoCAD, SolidWorks, Pro/E or CATIA. Cobalt Share also views Xenon, Argon and old Vellum Solids files. Graphite Share also views Vellum/Drawingboard 2D/3D files. [Click here](#) to access this free download.



Vellum:environments

This great add-on makes rendering fast and easy. Vellum:environments provides 15 virtual photography studios with large, smooth surfaces that are pre-lit for easy modification. Choose from Universal Studio, Chrome Studio and Infinite Studio, each in five different sizes to fit any object.

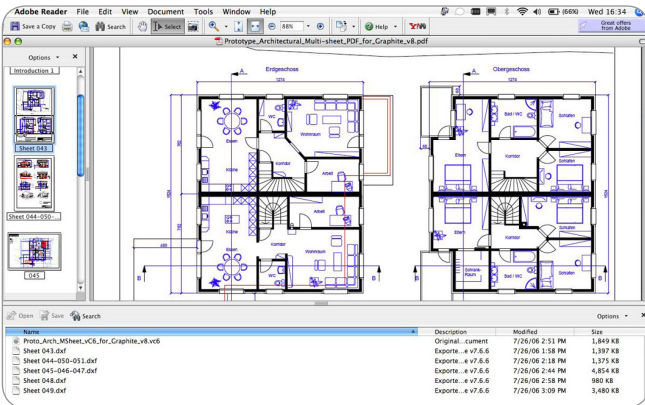
Easy to follow instructions are included for preparing a model for rendering, working with materials, placement of lighting and working with shadows. [Click here](#) to learn more. US\$100.



PDFs from within Graphite

Create multi-sheet PDFs from within Graphite v8 and embed source files directly in the PDF file.

CAD files make poor archive files because there's no way to embed system-specific features such as line styles, text fonts and hatch patterns. They are also difficult to email as some email systems change them to a text file. You can never be sure what you're drawing will look



like from one computer to another.

PDFs email easily. They accurately reproduce fonts, line styles and patterns.

In Graphite v8 create multi-sheet PDFs drawn from multiple models in the same file. Export Graphite layers as PDF layers, maintaining layer status as ON or OFF.

Optionally embed a Graphite file or any export file, such as DXF, directly into the PDF file. Everything for an entire project can be emailed safely, displayed accurately and archived conveniently.

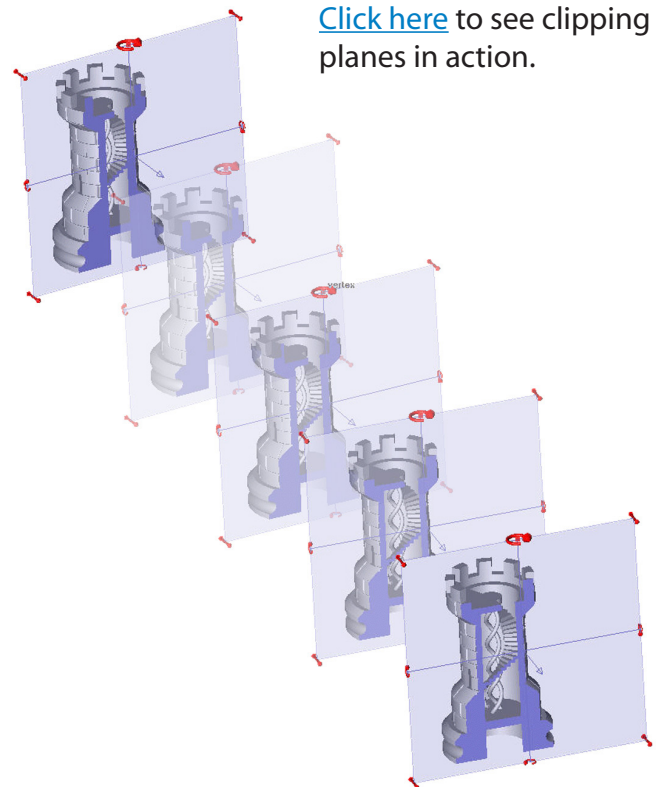
Use Adobe Acrobat to further enhance files, inserting and replacing pages, commenting and marking changes or tracking revisions.

PDF is an excellent file format for use in Adobe Illustrator and is preferred over the EPS or DXF for brining in Graphite files for technical illustrations.

Mac users, be sure to install Adobe's free Acrobat Reader to read PDFs. Though Mac OS X comes preinstalled with the free viewer called Preview, this program does not read layers properly and displays everything as ON, often presenting an unintelligible and useless graphic.

Advanced Clipping Planes

Cobalt, Xenon and Argon™ v8 have advanced clipping planes with interactive visual clipping and sectioning. Designate an infinite plane as a clipping plane and all objects on the screen are visually clipped and sectioned. Virtual handles appear on an expanded plane indicator, making it easy to get just the section view desired. Control the display colour of the sections and combine two or more clipping planes in one scene.



[Click here](#) to see clipping planes in action.

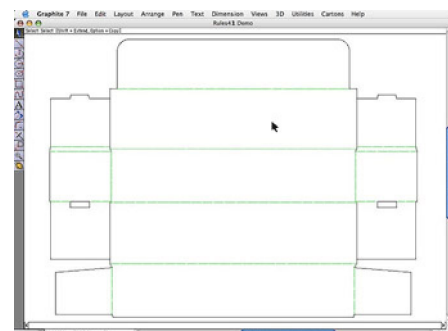
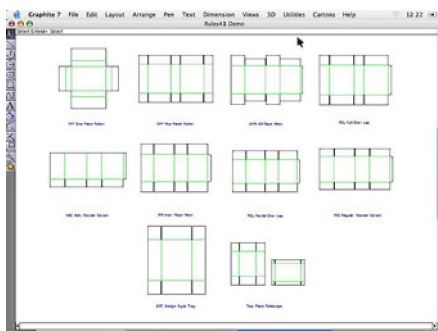
Support for Box and Temporary Point-of-Purchase Design

Ashlar-Vellum has had a long relationship with those in the box and temporary point-of-purchase design industry. Through the years, we've partnered with three different box design companies to provide the CAD engine behind such products as Score!, Rules, and Box Vellum.

It began in the late '80s, when Marin Newell, the original developer of Vellum software and founder of Ashlar, worked with Michael Collins to develop Ashlar Score! for the box design industry.

The Score! product line was later sold to Dimensional Impressions in the early '90's who continued to develop it in conjunction with our Vellum and Graphite software. DI was subsequently sold to ArtWork Systems. When ArtWork Systems was acquired by Esko they discontinued Score!

In the mid '90's the Japanese company, Comnet, began developing Box Vellum, also based on our Vellum and Graphite software. Box Vellum is sold throughout the world, but rarely in the United States. It includes a standard library plus many special features for box and display design. For more information visit the English language [Box Vellum](#) page on the Comnet website.



In 2009 Ashlar-Vellum entered into a new partnership with Michael Collins, one of the original developers of Score!, to establish [AlphaCorr](#) for marketing his products Rules and SteelRules. AlphaCorr software reads all Score! files including version 6.

[Rules](#) creates die lines for die cuts to drive a sample table or for processing through external die design software. A box and point-of-purchase display library is included. [SteelRules](#) builds on Rules with additional features for die design.



When looking for a solution to your box and temporary point-of-purchase design software needs, you can trust Ashlar-Vellum who's partnered with the leaders of the industry for over 20 years.

The Wizard of Whiz

Canadian designer Jean-François Jacques of Météore Design has a passion for making users come together as one with their products. From among Jacques' many innovative designs he recently won Grand Prize from the Palm enRoute Awards in Mobility Design for the On-Track airport electric scooter. The Palm enRoute awards honor ingenious ideas designed to take flight.

The On-Track scooter whisks passengers through international airports at a brisk 6.2 miles/10 kilometres per hour (about jogging speed). The sleek vehicle features an electric motor that is easily recharged at convenient docking stations and includes a GPS system for easy navigation between tight connections.

Jacques used Cobalt's™ Organic Workflow™ design process to develop almost everything on the On-Track. As he tells it:

“One of the most important things in the design process is the freedom to explore many paths. Cobalt's tools are perfect for this. It's so easy to create concepts, then rapidly explore them in 3D. It's easy to put parts in place for evaluation without some cumbersome assembly module. If I'm not satisfied, the on-demand history tree and parametric constraints make it easy to go back and modify my ideas.”

Like many Ashlar-Vellum designers, Jacques uses any number of design software tools as the job demands, but he prefers Cobalt. “We've tried other CAD and 3D modelling tools but the problem was the learning curve. With Cobalt it's possible to be operational in one day.”

He continues, “With Cobalt's comprehensive tools, we can create any shape, but its real strengths are the 3D Drafting Assistant, the user interface, the intuitive approach and the pleasure it is to use. These things are fundamental, the real spirit of the software.”



The On-Track electric airport scooter.



Jean-François Jacques holds an STL prototype.

Background/Contact:

Jean-François Jacques
Météore Design
4710, St-Ambroise
Suite 307
Montreal, QC H4C 2C7
Canada
Phone: +1 (514) 849-8824
Skype: meteoredesign
E-mail: info@meteoredesign.com
Website: www.meteoredesign.com