

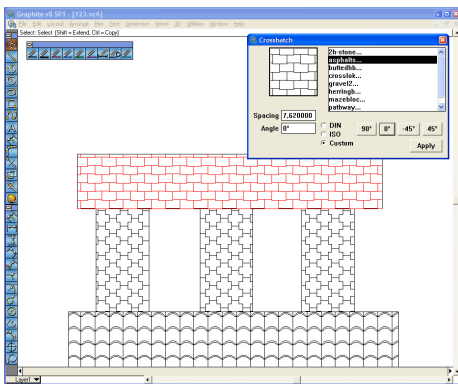
# The Design Explorer

## The Ashlar-Vellum User Newsletter

Second Quarter, 2009

### New Hatch Patterns in Graphite v8

Check out the latest build of Graphite v8 SP1, build 848, and you'll find support for AutoCAD-compatible hatch patterns in .PAT format.



These new patterns are in addition to the Ashlar-Vellum, ISO and DSN hatch patterns previously available in the software. AutoCAD hatch patterns can be downloaded from various websites and vendors, and placed in either the "Users" or "All Users" folder for easy access.

### Graphite Users Group Starting

R.C. Laton, also known as Tkat, is starting a Graphite Users Group on Yahoo Groups. A letter from Mr. Laton was emailed by Ashlar-

Vellum to appropriate Graphite v6, v7 and v8 licensed users inviting them to join.



The group's mission is to help those Graphite users who have questions or answers to problems and spread this information to other users who will benefit from them. This group is independent of Ashlar-Vellum and will be moderated by Mr. Laton or other members of the group as it grows. To join, send an email to [graphite\\_users-subscribe@yahoogroups.com](mailto:graphite_users-subscribe@yahoogroups.com) and use "Graphite" as the subject line.

### Reach for Your Dream

Ashlar-Vellum wants to inspire users to develop new businesses or bring new products of your own to market.



Our new promotion, Reach for Your Dream, is off to a good start.

The program encourages entrepreneurial spirit among those who have been caught in the challenges of today's economy.

With a signed agreement and proof of unemployment, recent graduation, or the recent establishment of a new business, Ashlar-Vellum is offering a 3-month trial license to Cobalt along with a courtesy license to Graphite.



After 3 months, with the submission of two drawings or models for the Ashlar-Vellum website Gallery, participants are eligible for a 50% discount off the monthly rental price of any program for up to one year.

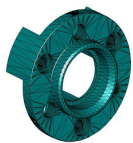
If you or someone you know qualifies for this new program, go to [www.ashlar.com](http://www.ashlar.com) for details and to download a special use agreement.

## Past *Design Explorer* Articles Available on Website

Technical user articles from past issues of the *Design Explorer* are available for easy reference on our website.

Full length features can be found under **Support>Articles**. These include:

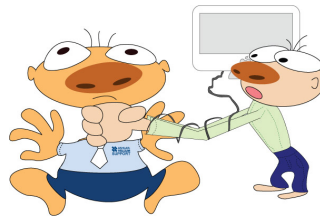
- What you Need to Know about Adobe's PDF
- What's Driving Your Model?
- Why is my Drawing a Tiny Speck?
- What Do I Need to Know about 3D Printing?



- Does Cobalt, Xenon or Argon do Sheet Metal?
- Support for Finite Element Analysis
- Support for Die and Box Design
- Reading AutoCAD's DWF Files
- Lighting Techniques for Great Photo-realistic Rendering



- Why Can't I Read this AutoCAD File?



- When Tech Support Can't Reproduce Your Problem
- How to Trace Over an Image in Graphite



- Avoiding the ACIS Error Monster
- File Translation Tutorial for 3D Modeling
- File Translation Tutorial for Graphite
- Old Software on New Operating Systems



Shorter articles are listed in **Support>Hot Topics & FAQs**, including:

- What you need to know about Adobe's PDF
- Does Ashlar-Vellum software work on the Intel Mac?

- Does Cobalt, Xenon or Argon do Sheet Metal?
- Does Ashlar-Vellum Software Support Die and Box Design
- When will Ashlar-Vellum Import Autodesk's DWF file format?



- Does Ashlar-Vellum software run on Vista?
- Does Ashlar-Vellum software run on Leopard?
- Does Ashlar-Vellum Support FEA?
- Does Ashlar-Vellum support Computer-aided Manufacturing (CAM) software?
- Why can't Graphite v8 read my AutoCAD file?
- I want to run my old Vellum software on my new operating system

## Tutorials on YouTube

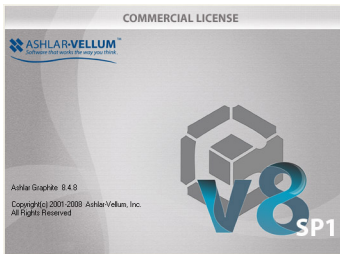
A number of Ashlar-Vellum videos are available on YouTube. These include archive movies from the past century and a number of user



tutorials from several different sources. To see them go to [www.youtube.com](http://www.youtube.com) and type Ashlar-Vellum in the search box.

## Graphite on the Go

Graphite now runs on tablet and netbook computers making it a great resource to take with you as you work.

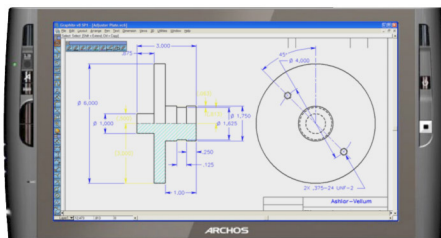


Use it to easily:

- Sketch the dimensions of existing items right there in the field.
- Brainstorm solutions with colleagues on the shop floor.
- Visualize ideas with your customers.
- Keep on top of projects even on vacation.

Several factors make Graphite a great field-ready machine including:

- New support for pen styluses in Graphite v8 SP1 build 848.



*Archos 9 Tablet UMPC*

- Graphite's unique stroke commands, perfect for use with styluses.

- Ashlar-Vellum's unique licensing agreement that lets you legally load our software on more than one computer as long as you are the only one using it and it is only open on one machine at a time.
- Complete installation via the web eliminating the need for a DVD drive.
- Increased power, smaller size and reduced cost of compatible hardware.

A number of new, more powerful tablet and netbook PCs are now available at surprisingly low prices including HP's 110 EP or Mini 1101, both starting at \$329. The 2go Convertible Tablet with stylus sells for as low as \$499.



*CTL 2go Convertible Tablet with Stylus*

Want to be designer chic? Move up to the HP 1140 Vivienne Tam edition for just \$699.



*HP Mini 1140 Netbook Vivienne Tam Edition*



*MacBook Air*

There are rumors of a new low cost Mac tablet coming but nothing has been officially announced. On the other hand, the sleek 1.86 GHz MacBook Air at \$1499 will run Graphite with flair.



*Gigabyte T1028*

While the lower horse power of the netbook and tablet machines will easily run Graphite, most are underpowered for more than occasional use with Cobalt, Xenon or Argon. These smaller machines are useful for client presentations and reviews, but to do serious 3D modeling stick with the higher powered processors currently found in the bigger machines.

# Illuminating More than Product Design

Brazilian designer, Celso Santos, of Rio 21, uses Cobalt™ for more than just product design. To him, the best way to maximize his profit on new products in Brazil is to handle not only the design, but the production, packaging, marketing and distribution to retail outlets. Santos finds the 3D capabilities in Cobalt so powerful and easy that he uses it in all areas of his business including packaging, customer assembly instructions, communication with his tool maker, even for his business card.

Cobalt's powerful Organic Workflow™ paradigm allows Santos to go back and forth between 2D and 3D as he designs and develops a new product like the Luminária RJ 21 table lamp, refining his ideas. Then he uses PDFs of Cobalt's precision engineering drawings in Adobe products to facilitate discussions and easy design changes with the manufacturing teams. As he tells it:

***“One great thing about Cobalt is the ability to improve our communications. There is not a point that I can't explain to someone on the other side of the world. I could talk to our tool maker while he was looking at the PDF.”***

Santos also uses Cobalt to design not only the colorful box in which the Luminária RJ 21 will be sold, but also the assembly instructions to be enclosed as part of the packaging so the customer will know how to put it together. Santos tells us when developing those instructions, “I found that it was much easier to edit things in Cobalt than in Adobe Illustrator.”

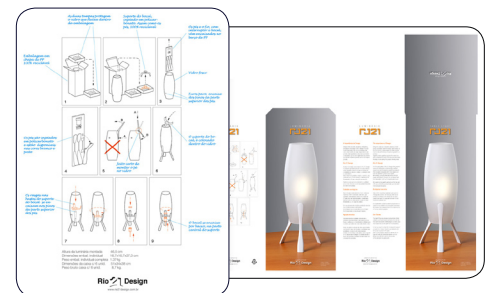
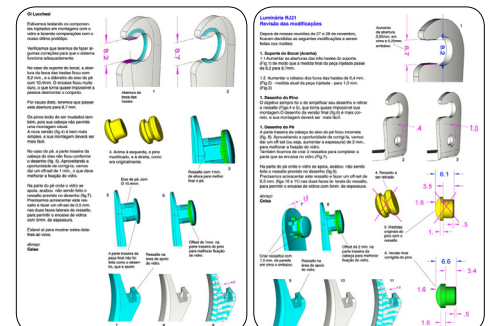
Cobalt even makes traditional product photography more efficient. Santos says, “When I go into the studio I already know the angles, the lights and everything that I want because I've already made all the trials using Cobalt. So it's easy to have a very good idea of the final result. We've reduced the time of development because of this.”

Even the business cards for Rio 21 are partially designed using Cobalt. Because the card uses a 3D image, Santos discovered it was easier to use Cobalt, do a model-to-sheet, edit any extra lines and then take it into other software to make the layout of the card.

Using Cobalt across so many areas of a business makes it increasingly cost effective to own.



Santos used Cobalt to design not only the Luminária RJ 21 table lamp itself but to facilitate production, create packaging and illustrate customer assembly drawings.



**Background/Contact info:**

For more details on this project contact:

**Rio 21 Design**

Rua Barão da Torre, 698 apto.16  
22411-002 Ipanema  
Rio de Janeiro, RJ, Brazil  
Phone: +55 (21) 2294-5053  
Fax: +55 (21) 2294-5053  
Email: contato@rio21design.com.br  
Web: www.rio21design.com.br