

The Design Explorer

The Ashlar-Vellum User Newsletter

Second Quarter, 2011

QR Codes on Website

As part of the overall search engine optimization of the www.ashlar.com website, we've added Quick Response bar codes as an easy way to transfer a page quickly to your mobile device for future reference.



With a QR code reader app installed on your mobile device, point the camera at the QR code and click. The entire page is captured to your mobile for later reference. Look for QR codes in the top section of the pages, just under the main headings, in the path line.

Last Chance to Upgrade REALLY Old Software

These are the last couple of days to upgrade your ancient Vellum 2D™, Vellum 3D™, Vellum Draft™ and Vellum Solids™ software to Graphite™, Cobalt™ or Xenon™ v8.

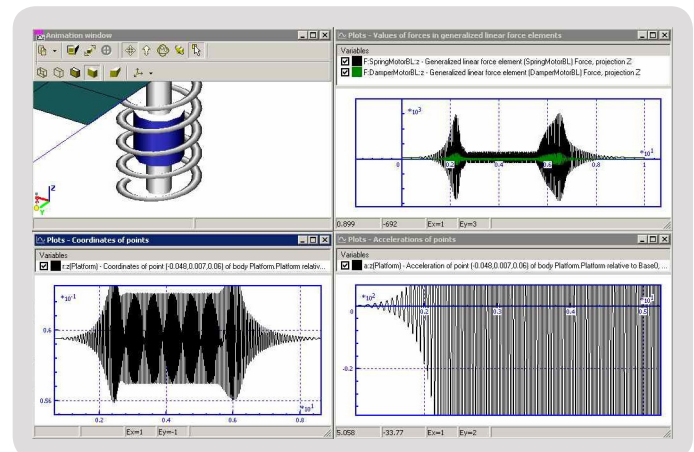


As of July 1, 2011 software that is 10 years old or older will no longer be considered eligible for upgrade pricing. While the big-name CAD companies say, "If you miss two upgrades, you're out," we prefer a more lenient approach and have drawn the line at a decade.

Dynamic Motion Software

Ashlar-Vellum is looking to add dynamic motion analysis and presentation software for those customers who need these capabilities. Our thinking is that this will be a standalone product in the Designer Elements™ series that will be closely integrated with Cobalt™ and the Iridium™ FEA software when running.

Unlike mere kinematic analysis that calculates the motion of 3D parts without any reference to the physics involved, dynamic motion calculates the motion of objects in relationship to forces, torques, inertia and gravity with defined joints, constraints, actuators, springs and dampers.



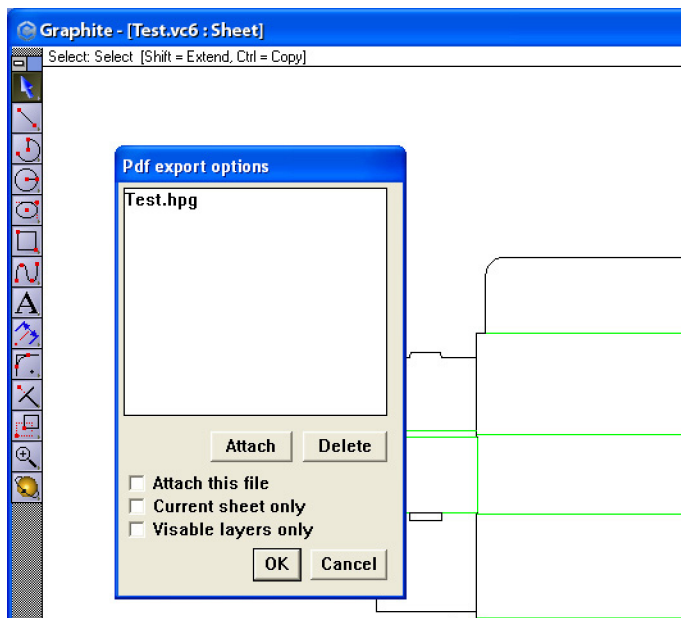
Click on the movie graphic to see an example of dynamic motion analysis in action.

New PDF Options Coming in Graphite v9

We're adding two new options to the PDF export function in Graphite v9.

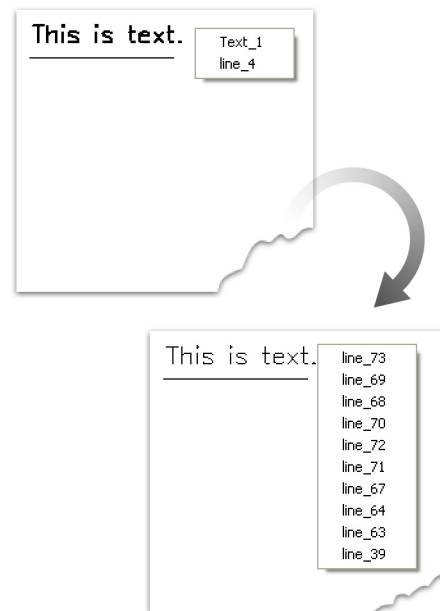
First, you will be able to select Current Sheet Only instead of all sheets which is the standard now.

Second, you can opt to export Visible Layers Only. This is being introduced because Preview on the Mac currently ignores the state of layers being on or off and it's particularly useful to present drawings where only the desired layers can be seen.



Tessellated Text Available for Graphite

A new utility is available for Graphite that will tessellate the letters of stroke-type fonts—such as those in .FNT, .ASX, and .SHX files—into line segments. This allows CAM software that won't otherwise accept standard text in .DXF files to cut, laser or water jet the shapes of the letters during production. This utility will be included in Graphite v9. If you need it sooner, contact Ashlar-Vellum technical support for a software patch that works with Graphite v8. Future versions of the utility will support OpenType, PostScript Type 1, and TrueType fonts.



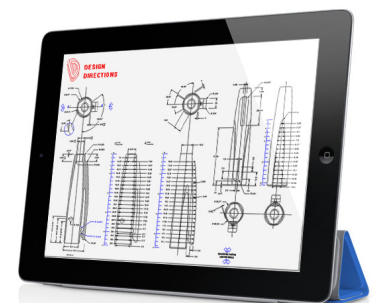
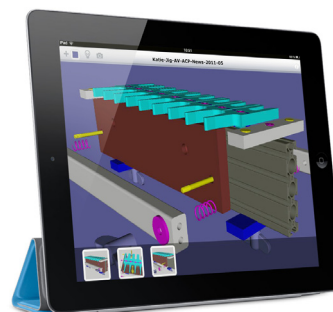
Ashlar-Vellum Files on the iPad

There are a couple of ways that Ashlar-Vellum files can be easily displayed on an iPad.

For 2D drawings, simply generate a 2D PDF out of Ashlar-Vellum software using the built-in feature under **File>Export**.

For 3D models, use one of the SimLab Composer programs (\$99 to \$249) to export a SimLab iPad .ZIM file. Then use the SimLab 3D CAD Viewer available in Apple's iPad App Store to view the files on your iPad.

Terry Hampton's Katie Jig displayed in SimLab CAD Viewer on iPad2.



Ballpoint pen detail by Satish Gokhale of Design Directions displayed on the iPad as a 2D PDF.

Disappearing Palette Bug Exterminated in Graphite

The Graphite development team has nailed the bug whereby extreme power users rapidly clicking on icons caused the Graphite main tool palette to disappear and the software to crash. This issue has been part of Graphite since its inception but has only become noticeable as machines have become faster. A special build is privately available to the small number of users experiencing this issue. The fix will be publically available in the next hot patch update (Build 882 or above). If you're experiencing this issue, first use **Help>Check Web for Updates** to see if a new build has been posted. If that does not resolve the issue submit a support ticket for instructions to receive the special link to our FTP site.



Welcome Back Marina Kukarina



Marina Kukarina has joined us again after an extended maternity leave. Formerly an English teacher, she's once again part of our European order processing team and helps with the telephones and customer service. Marina loves comedy films and spending

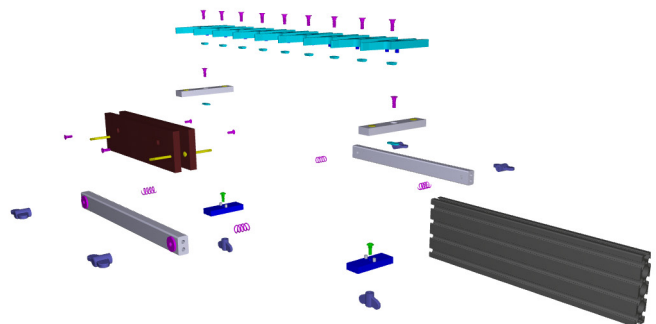
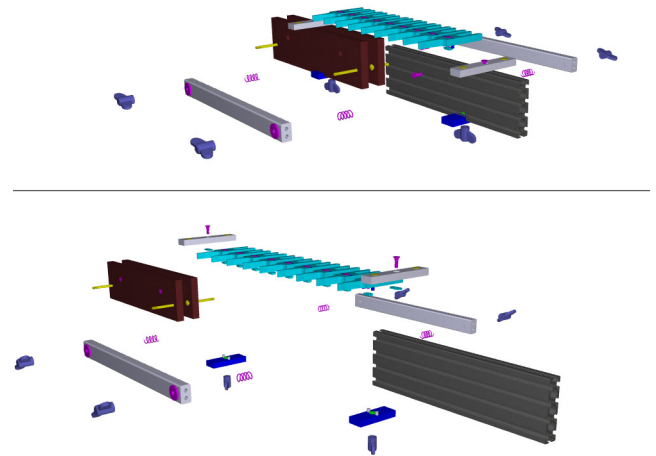
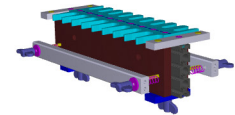
time with her husband, Ashlar-Vellum technical support guru, Alex Kukarin, her son and young daughter. We're glad to have her back.

Create Animated 3D PDFs with SimLabs Composer

Need to add an animated 3D model to a document? Imprecise 3D animations can be added to PDF documents using SimLab Composer Animation Edition. This \$249 program will render with materials and animate a 3D model created in Cobalt, Xenon or Argon.

Files must be read by Adobe Acrobat Viewer. Preview on the Mac will not display them correctly.

Katie Jig dovetail jig system model courtesy of Terry Hampton, www.katiejig.com



Frames of animation extracted from a 3D PDF. [Click here](#) to download and view the PDF with the embedded 3D animation. At nearly 15MB, this file will take a little time to download.

Art, Ceiling Fans & Square Roots

Ceiling fans and beautiful form make an unexpected pair. Mark Gajewski of G Squared brings the two together, one ceiling at a time with his award-winning designs. Some of the most notable are featured in the permanent collection of the Chicago Athenaeum Museum of Architecture and Design.

Gajewski, a Polish native and entrepreneur, relocated to the United States, and in 1996 formed the company G Squared. Building on his interest in contemporary ceiling fans, Gajewski did some research to find only two of that type on the market. He read the book *Growing a Business* by Paul Hawkin, then began an endeavor which would define his career path and his niche.

Gajewski came up with his first design, the San Francisco ceiling fan, developing and rendering it in Cobalt™ design software. From his own savings, Gajewski designed and produced the first 50 units. Once he launched the design, the customer response was overwhelming.

“Using Cobalt has allowed me to translate my ideas into reality and to share my visions. Being able to model and photo-realistically render sculptural 3D shapes was very valuable in selling my ideas to others.”

G Squared takes existing solutions to a new level, adding beautiful form and impeccable quality. Although G Squared focuses mainly on ceiling fans and lighting products, Gajewski also designs for manufacturers like Prima Lighting and Inpako, for whom he designed the luxurious “Haven” leather arm chair.

Today Gajewski is using Cobalt to model an advanced ceiling fan design which could become a breakthrough product with a similar feel to Frank Gehry’s Disney Concert Hall—very sculptural yet simple. On the horizon, Mark envisions a completely new collection to embody his design philosophy—the simplest geometric forms, combined with beautiful proportions and simple materials—all without sacrificing functionality.



The San Francisco ceiling fan is featured in the permanent collection of the Chicago Athenaeum Museum of Architecture and Design and has won the Good Design Award, one of the world’s most prestigious design awards.



Mark Gajewski has created a wide variety of elegant and artistic ceiling fans.

Background/Contact:

For more details on this project contact:

G Squared

PO Box 2480,
Avila Beach, CA 93424

+1 (877) 858-5333

www.g2art.com